



QUALITY POLICY & GOVERNANCE COMMITMENT

The French Multiple Sclerosis (MS) Registry (OFSEP) is a collaborative project led by a consortium associating the *EDMUS Foundation against multiple sclerosis*, the *University Claude Bernard Lyon 1*, the *Hospices Civils de Lyon*. Our ambition is to make the OFSEP project a major epidemiological tool on MS for the scientific community in France and abroad, industrial players and health care authorities. The project is made possible thanks to the commitment of the EDMUS centers that enrich the cohort with clinical, biological and MRI data.

THE DNA OF THE OFSEP PROJECT

01

Respond to a public health mission by promoting MS research in France and abroad

02

Standardize real-world MS health data collection

03

Bring together experts involved in working on a collaborative project of excellence

04

Make real-world data from the OFSEP cohort available to researchers

05

Put innovation and clinical research at the service of patients and their families

The OFSEP project is implemented by EDMUS centers and OFSEP Coordination Team. They guarantee the enrichment of the patient cohort and the management of academic and industrial research projects in compliance with applicable local regulations and legal requirements.

This is the reason why we are committed to a quality approach based on the NF ISO 9001: 2015 standard, which

is a guarantee of professionalism and excellence for our stakeholders.

We therefore wish to meet the expectations of our partners, continue to support EDMUS centers and provide a quality service.

QUALITY OBJECTIVES OF THE OFSEP PROJECT

GUARANTEE THE QUALITY AND SECURITY OF THE COLLECTED DATA,

while respecting the rights of the patients participating in the cohort.



LISTEN TO OUR PARTNERS

to ensure the achievement of our common objectives.

MOBILIZE INTERNAL AND EXTERNAL EXPERTISE

required to assess and support research projects.

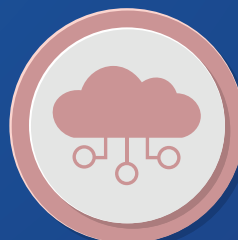


DEVELOP INNOVATIVE TOOLS

to facilitate and standardize MS health data collection.

HIGHLIGHT THE RESULTS OF RESEARCH

based on MS data from the OFSEP Cohort



HARMONIZE MS HEALTH DATA COLLECTION

with the various national and international registries to promote scientific cooperation in the world.

The OFSEP Scientific Coordinator and the OFSEP Resources Manager, are committed to ensuring the proper functioning of OFSEP and taking steps to mobilize the human, organizational and technical resources necessary to maintain and improve the quality management system.